

# Berimbau Duo no. 1

for Daniel Eastwood and Christopher Mrofcza

SCORE

$\text{♩} = 86$

Gregory Meyer

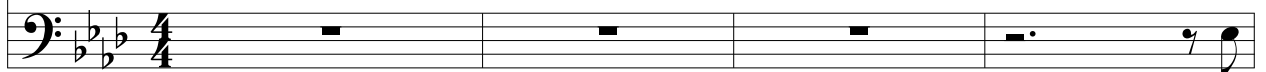
Berimbau 1  
5:4 (Ab3:C4)



*p*

*mf*

Berimbau 2  
2:1 (Eb3:Eb4)



*p*

Bau 1



Bau 2



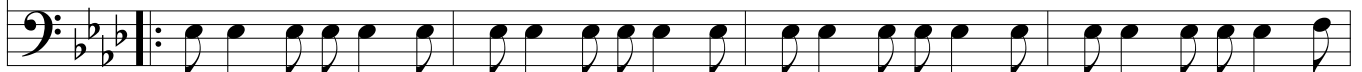
A

Bau 1



*f-ff*

Bau 2



*f-ff*

Bau 1



Bau 2

